

Acta Crystallographica Section E

## Structure Reports

Online

ISSN 1600-5368

## 2,3-Bis[(2-cyanoethyl)sulfanyl]-1,4,5,8-tetrathiafulvalene-6,7-dicarbonitrile

Cui-Ping Jiang,<sup>a</sup> Bao Li,<sup>b</sup> Bing-Zhu Yin<sup>a\*</sup> and Li-Xin Wu<sup>b</sup><sup>a</sup>Key Laboratory of Organism Functional Factors of the Changbai Mountain, Yanbian University, Ministry of Education, Yanji 133002, People's Republic of China, and<sup>b</sup>State Key Laboratory of Supramolecular Structure and Materials, College of Chemistry, Jilin University, Changchun 130012, People's Republic of China  
Correspondence e-mail: zqcong@ybu.edu.cn

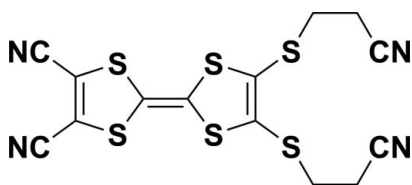
Received 7 July 2010; accepted 16 July 2010

Key indicators: single-crystal X-ray study;  $T = 290$  K; mean  $\sigma(\text{C}-\text{C}) = 0.002$  Å;  $R$  factor = 0.026;  $wR$  factor = 0.072; data-to-parameter ratio = 18.5.

In the title compound,  $\text{C}_{14}\text{H}_8\text{N}_4\text{S}_6$ , the two five-membered rings lie in the same plane with an r.m.s. deviation of 0.0334 (5) Å. The crystal structure features intermolecular  $\text{S} \cdots \text{N}$  interactions of 3.295 (4) Å.

## Related literature

For background to the electrical properties of tetrathiafulvalene derivatives, see: Fabre (2000); Batail (2004). For the synthesis, see Chen *et al.* (2005). For a related structure, see: Hou *et al.* (2010).



## Experimental

## Crystal data

$\text{C}_{14}\text{H}_8\text{N}_4\text{S}_6$   
 $M_r = 424.66$   
 Triclinic,  $P\bar{1}$

$a = 7.3055$  (15) Å  
 $b = 8.5193$  (17) Å  
 $c = 15.386$  (3) Å

$\alpha = 82.52$  (3)°  
 $\beta = 76.97$  (3)°  
 $\gamma = 72.43$  (3)°  
 $V = 887.4$  (3) Å<sup>3</sup>  
 $Z = 2$

Mo  $K\alpha$  radiation  
 $\mu = 0.77$  mm<sup>-1</sup>  
 $T = 290$  K  
 $0.13 \times 0.12 \times 0.11$  mm

## Data collection

Rigaku R-AXIS RAPID diffractometer  
 Absorption correction: multi-scan (ABSCOR; Higashi, 1995)  
 $T_{\min} = 0.906$ ,  $T_{\max} = 0.920$

8751 measured reflections  
 4020 independent reflections  
 3415 reflections with  $I > 2\sigma(I)$   
 $R_{\text{int}} = 0.021$

## Refinement

$R[F^2 > 2\sigma(F^2)] = 0.026$   
 $wR(F^2) = 0.072$   
 $S = 1.09$   
 4020 reflections

217 parameters  
 H-atom parameters constrained  
 $\Delta\rho_{\text{max}} = 0.35$  e Å<sup>-3</sup>  
 $\Delta\rho_{\text{min}} = -0.20$  e Å<sup>-3</sup>

Data collection: *RAPID-AUTO* (Rigaku, 1998); cell refinement: *RAPID-AUTO*; data reduction: *CrystalStructure* (Rigaku/MSK, 2002); program(s) used to solve structure: *SHELXS97* (Sheldrick, 2008); program(s) used to refine structure: *SHELXL97* (Sheldrick, 2008); molecular graphics: *PLATON* (Spek, 2009); software used to prepare material for publication: *SHELXL97*.

The authors acknowledge financial support from the National Natural Science Foundation of China (grant No. 20662010), the Specialized Research Fund for the Doctoral Programme of Higher Education (grant No. 2006184001) and the Open Project of the State Key Laboratory of Supramolecular Structure and Materials, Jilin University.

Supplementary data and figures for this paper are available from the IUCr electronic archives (Reference: NG2799).

## References

- Batail, P. (2004). *Chem. Rev.* **104**, 4887–5782.  
 Chen, T., Wang, C. L., Qiu, H., Jin, L. Y. & Yin, B. Z. (2005). *Heterocycles*, **65**, 187–193.  
 Fabre, J. M. (2000). *J. Phys. IV*, **10**, 3–19.  
 Higashi, T. (1995). *ABSCOR*. Rigaku Corporation, Tokyo, Japan.  
 Hou, R.-B., Li, B., Chen, T., Yin, B.-Z. & Wu, L.-X. (2010). *Acta Cryst.* **E66**, o1379.  
 Rigaku (1998). *RAPID-AUTO*. Rigaku Corporation, Tokyo, Japan.  
 Rigaku/MSK (2002). *CrystalStructure*. Rigaku/MSK Inc., The Woodlands, Texas, USA.  
 Sheldrick, G. M. (2008). *Acta Cryst.* **A64**, 112–122.  
 Spek, A. L. (2009). *Acta Cryst.* **D65**, 148–155.

**supplementary materials**

*Acta Cryst.* (2010). E66, o2079 [ doi:10.1107/S1600536810028473 ]

## 2,3-Bis[(2-cyanoethyl)sulfanyl]-1,4,5,8-tetrathiafulvalene-6,7-dicarbonitrile

C.-P. Jiang, B. Li, B.-Z. Yin and L.-X. Wu

### Comment

The derivants of tetrathiafulvalene (TTF), especially functionalized with hydroxyl or amine groups, have been studied extensively for their interesting electrical properties (Fabre, 2000; Batail, 2004). Herein, we report the crystal structure of the title compound.

The title compound, as shown in Fig. 1, all bond lengths and angles are normal and comparable with those reported for the related structure (Hou *et al.*, 2010). In the crystal, the two five-membered rings lie in the same plane with an r.m.s. deviation of 0.0334 (5) Å. The intermolecular S...N interactions with the distance of 3.295 (4) Å link the molecules into one-dimensional chain along a+c direction.

### Experimental

The title compound was synthesized as described in the literature for the analogous compound 2,3-Bis(butylthio)-6,7-dicarbonitrile-1,4,5,8-tetrathiafulvalene (Chen *et al.*, 2005). Single crystals and single crystals suitable for X-ray diffraction were prepared by slow evaporation a mixture of dichloromethane and petroleum (60–90 °C) at room temperature.

### Refinement

Carbon-bound H-atoms were placed in calculated positions with C—H = 0.97 Å and were included in the refinement in the riding model with  $U_{\text{iso}}(\text{H}) = 1.2 U_{\text{eq}}(\text{C})$ .

### Figures

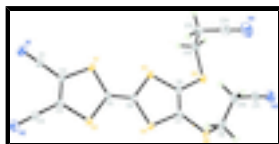


Fig. 1. The asymmetric of title compound, with the atom numbering. Displacement ellipsoids of non-H atoms are drawn at the 30% probability level.

## 2-{4,5-bis[(cyanomethyl)sulfanyl]-1,3-dithiolan-2-ylidene}-1,3-dithiolane-4,5-dicarbonitrile

### Crystal data

$\text{C}_{14}\text{H}_8\text{N}_4\text{S}_6$   
 $M_r = 424.66$

Triclinic,  $P\bar{1}$

Hall symbol: -P 1

$a = 7.3055$  (15) Å

$b = 8.5193$  (17) Å

$Z = 2$

$F(000) = 432$

$D_x = 1.589$  Mg m<sup>-3</sup>

Mo  $K\alpha$  radiation,  $\lambda = 0.71073$  Å

Cell parameters from 7465 reflections

$\theta = 3.0\text{--}27.5^\circ$

# supplementary materials

---

$c = 15.386 (3) \text{ \AA}$	$\mu = 0.77 \text{ mm}^{-1}$
$\alpha = 82.52 (3)^\circ$	$T = 290 \text{ K}$
$\beta = 76.97 (3)^\circ$	Block, black
$\gamma = 72.43 (3)^\circ$	$0.13 \times 0.12 \times 0.11 \text{ mm}$
$V = 887.4 (3) \text{ \AA}^3$	

## Data collection

Rigaku R-Axis RAPID diffractometer	4020 independent reflections
Radiation source: fine-focus sealed tube graphite	3415 reflections with $I > 2\sigma(I)$
$\omega$ scans	$R_{\text{int}} = 0.021$
Absorption correction: multi-scan (ABSCOR; Higashi, 1995)	$\theta_{\text{max}} = 27.5^\circ, \theta_{\text{min}} = 3.0^\circ$
$T_{\text{min}} = 0.906, T_{\text{max}} = 0.920$	$h = -9 \rightarrow 9$
8751 measured reflections	$k = -11 \rightarrow 9$
	$l = -19 \rightarrow 19$

## Refinement

Refinement on $F^2$	Primary atom site location: structure-invariant direct methods
Least-squares matrix: full	Secondary atom site location: difference Fourier map
$R[F^2 > 2\sigma(F^2)] = 0.026$	Hydrogen site location: inferred from neighbouring sites
$wR(F^2) = 0.072$	H-atom parameters constrained
$S = 1.09$	$w = 1/[\sigma^2(F_o^2) + (0.0391P)^2 + 0.0566P]$
4020 reflections	where $P = (F_o^2 + 2F_c^2)/3$
217 parameters	$(\Delta/\sigma)_{\text{max}} = 0.001$
0 restraints	$\Delta\rho_{\text{max}} = 0.35 \text{ e \AA}^{-3}$
	$\Delta\rho_{\text{min}} = -0.20 \text{ e \AA}^{-3}$

## Special details

**Experimental.** (See detailed section in the paper)

**Geometry.** All e.s.d.'s (except the e.s.d. in the dihedral angle between two l.s. planes) are estimated using the full covariance matrix. The cell e.s.d.'s are taken into account individually in the estimation of e.s.d.'s in distances, angles and torsion angles; correlations between e.s.d.'s in cell parameters are only used when they are defined by crystal symmetry. An approximate (isotropic) treatment of cell e.s.d.'s is used for estimating e.s.d.'s involving l.s. planes.

**Refinement.** Refinement of  $F^2$  against ALL reflections. The weighted  $R$ -factor  $wR$  and goodness of fit  $S$  are based on  $F^2$ , conventional  $R$ -factors  $R$  are based on  $F$ , with  $F$  set to zero for negative  $F^2$ . The threshold expression of  $F^2 > \sigma(F^2)$  is used only for calculating  $R$ -factors(gt) etc. and is not relevant to the choice of reflections for refinement.  $R$ -factors based on  $F^2$  are statistically about twice as large as those based on  $F$ , and  $R$ -factors based on ALL data will be even larger.

Fractional atomic coordinates and isotropic or equivalent isotropic displacement parameters ( $\text{\AA}^2$ )

$x$	$y$	$z$	$U_{\text{iso}}^*/U_{\text{eq}}$
-----	-----	-----	----------------------------------

C1	-0.3844 (2)	0.29787 (18)	-0.14033 (10)	0.0352 (3)
C2	-0.2172 (2)	0.25475 (16)	-0.09903 (9)	0.0298 (3)
C3	-0.0448 (2)	0.14665 (16)	-0.13307 (9)	0.0292 (3)
C4	-0.0139 (2)	0.06331 (18)	-0.21181 (10)	0.0343 (3)
C5	0.01227 (19)	0.24707 (15)	0.00609 (9)	0.0275 (3)
C6	0.09080 (19)	0.27024 (15)	0.07290 (9)	0.0276 (3)
C7	0.3151 (2)	0.25405 (16)	0.18511 (9)	0.0292 (3)
C8	0.14603 (19)	0.36850 (16)	0.21550 (8)	0.0277 (3)
C9	0.4763 (2)	0.01342 (18)	0.30608 (10)	0.0420 (4)
H9A	0.4424	-0.0567	0.2711	0.050*
H9B	0.5960	-0.0498	0.3258	0.050*
C10	0.3135 (2)	0.05787 (19)	0.38801 (10)	0.0428 (4)
H10A	0.1927	0.1205	0.3690	0.051*
H10B	0.2928	-0.0424	0.4210	0.051*
C11	0.3623 (2)	0.1552 (2)	0.44647 (10)	0.0433 (4)
C12	-0.1478 (2)	0.56270 (19)	0.33796 (10)	0.0423 (4)
H12A	-0.1782	0.6517	0.3770	0.051*
H12B	-0.2004	0.6090	0.2847	0.051*
C13	-0.2516 (3)	0.4360 (2)	0.38520 (11)	0.0539 (4)
H13A	-0.3915	0.4887	0.3985	0.065*
H13B	-0.2281	0.3495	0.3454	0.065*
C14	-0.1865 (3)	0.3618 (2)	0.46835 (13)	0.0552 (4)
N1	-0.5150 (2)	0.33249 (19)	-0.17432 (10)	0.0528 (4)
N2	0.0141 (2)	-0.00538 (19)	-0.27451 (10)	0.0527 (4)
N3	0.4075 (2)	0.22886 (19)	0.49019 (10)	0.0591 (4)
N4	-0.1328 (3)	0.3044 (2)	0.53217 (12)	0.0805 (6)
S1	-0.23311 (5)	0.34738 (4)	-0.00256 (2)	0.03481 (10)
S2	0.14881 (5)	0.11197 (4)	-0.07788 (2)	0.03252 (10)
S3	-0.04110 (5)	0.40991 (4)	0.15451 (2)	0.03209 (10)
S4	0.33230 (5)	0.16723 (4)	0.08462 (2)	0.03296 (10)
S5	0.11523 (6)	0.48537 (4)	0.30581 (2)	0.03523 (10)
S6	0.52255 (5)	0.19092 (5)	0.23438 (2)	0.03667 (10)

Atomic displacement parameters ( $\text{\AA}^2$ )

	$U^{11}$	$U^{22}$	$U^{33}$	$U^{12}$	$U^{13}$	$U^{23}$
C1	0.0287 (7)	0.0404 (7)	0.0378 (8)	-0.0074 (6)	-0.0108 (6)	-0.0051 (6)
C2	0.0279 (7)	0.0340 (7)	0.0304 (7)	-0.0099 (5)	-0.0106 (5)	-0.0011 (5)
C3	0.0290 (7)	0.0339 (7)	0.0276 (7)	-0.0101 (5)	-0.0094 (5)	-0.0024 (5)
C4	0.0298 (7)	0.0405 (7)	0.0339 (8)	-0.0080 (6)	-0.0107 (6)	-0.0040 (6)
C5	0.0256 (6)	0.0296 (6)	0.0279 (6)	-0.0058 (5)	-0.0082 (5)	-0.0033 (5)
C6	0.0266 (7)	0.0298 (6)	0.0265 (6)	-0.0061 (5)	-0.0071 (5)	-0.0036 (5)
C7	0.0284 (7)	0.0358 (7)	0.0247 (6)	-0.0073 (5)	-0.0090 (5)	-0.0039 (5)
C8	0.0299 (7)	0.0316 (7)	0.0232 (6)	-0.0087 (5)	-0.0079 (5)	-0.0026 (5)
C9	0.0485 (9)	0.0365 (8)	0.0406 (8)	-0.0009 (6)	-0.0209 (7)	-0.0058 (6)
C10	0.0468 (9)	0.0429 (8)	0.0410 (8)	-0.0129 (7)	-0.0177 (7)	0.0061 (7)
C11	0.0442 (9)	0.0469 (9)	0.0318 (8)	-0.0025 (7)	-0.0095 (7)	0.0002 (7)
C12	0.0417 (9)	0.0431 (8)	0.0338 (8)	0.0021 (6)	-0.0044 (6)	-0.0126 (6)

## supplementary materials

---

C13	0.0451 (10)	0.0769 (12)	0.0416 (9)	-0.0216 (9)	0.0003 (8)	-0.0158 (8)
C14	0.0595 (12)	0.0595 (11)	0.0473 (10)	-0.0259 (9)	0.0031 (9)	-0.0079 (9)
N1	0.0366 (8)	0.0634 (9)	0.0596 (9)	-0.0057 (6)	-0.0221 (7)	-0.0064 (7)
N2	0.0516 (9)	0.0652 (9)	0.0444 (8)	-0.0106 (7)	-0.0157 (7)	-0.0181 (7)
N3	0.0653 (11)	0.0632 (9)	0.0453 (8)	-0.0030 (8)	-0.0172 (8)	-0.0165 (7)
N4	0.1064 (17)	0.0812 (13)	0.0587 (11)	-0.0397 (12)	-0.0161 (11)	0.0099 (10)
S1	0.02631 (18)	0.0407 (2)	0.0367 (2)	-0.00195 (14)	-0.01004 (15)	-0.01111 (15)
S2	0.02509 (18)	0.03996 (19)	0.03258 (19)	-0.00337 (14)	-0.00934 (14)	-0.01026 (15)
S3	0.02685 (18)	0.03621 (19)	0.03086 (18)	-0.00055 (13)	-0.00891 (14)	-0.00827 (14)
S4	0.02534 (18)	0.0421 (2)	0.02945 (18)	-0.00093 (14)	-0.00827 (14)	-0.01089 (14)
S5	0.0400 (2)	0.03828 (19)	0.02918 (18)	-0.01030 (15)	-0.00711 (15)	-0.00961 (14)
S6	0.02798 (19)	0.0510 (2)	0.03197 (19)	-0.00714 (15)	-0.01181 (15)	-0.00518 (16)

### Geometric parameters ( $\text{\AA}$ , $^\circ$ )

C1—N1	1.1341 (19)	C9—C10	1.524 (2)
C1—C2	1.4316 (19)	C9—S6	1.8232 (17)
C2—C3	1.355 (2)	C9—H9A	0.9700
C2—S1	1.7352 (15)	C9—H9B	0.9700
C3—C4	1.424 (2)	C10—C11	1.464 (2)
C3—S2	1.7417 (14)	C10—H10A	0.9700
C4—N2	1.1404 (19)	C10—H10B	0.9700
C5—C6	1.3462 (19)	C11—N3	1.136 (2)
C5—S2	1.7611 (15)	C12—C13	1.520 (2)
C5—S1	1.7648 (14)	C12—S5	1.8066 (17)
C6—S3	1.7527 (15)	C12—H12A	0.9700
C6—S4	1.7558 (14)	C12—H12B	0.9700
C7—C8	1.351 (2)	C13—C14	1.465 (3)
C7—S6	1.7553 (14)	C13—H13A	0.9700
C7—S4	1.7628 (14)	C13—H13B	0.9700
C8—S5	1.7483 (14)	C14—N4	1.136 (2)
C8—S3	1.7536 (14)		
N1—C1—C2	178.90 (18)	C11—C10—C9	111.21 (14)
C3—C2—C1	122.75 (13)	C11—C10—H10A	109.4
C3—C2—S1	118.32 (11)	C9—C10—H10A	109.4
C1—C2—S1	118.92 (11)	C11—C10—H10B	109.4
C2—C3—C4	123.46 (13)	C9—C10—H10B	109.4
C2—C3—S2	117.65 (11)	H10A—C10—H10B	108.0
C4—C3—S2	118.88 (10)	N3—C11—C10	177.38 (19)
N2—C4—C3	178.71 (16)	C13—C12—S5	115.32 (11)
C6—C5—S2	121.71 (11)	C13—C12—H12A	108.4
C6—C5—S1	122.52 (11)	S5—C12—H12A	108.4
S2—C5—S1	115.77 (8)	C13—C12—H12B	108.4
C5—C6—S3	122.05 (11)	S5—C12—H12B	108.4
C5—C6—S4	123.27 (11)	H12A—C12—H12B	107.5
S3—C6—S4	114.67 (8)	C14—C13—C12	112.75 (15)
C8—C7—S6	125.66 (11)	C14—C13—H13A	109.0
C8—C7—S4	117.08 (10)	C12—C13—H13A	109.0
S6—C7—S4	117.20 (8)	C14—C13—H13B	109.0

C7—C8—S5	123.02 (11)	C12—C13—H13B	109.0
C7—C8—S3	117.09 (10)	H13A—C13—H13B	107.8
S5—C8—S3	119.69 (8)	N4—C14—C13	178.8 (2)
C10—C9—S6	114.19 (10)	C2—S1—C5	94.05 (7)
C10—C9—H9A	108.7	C3—S2—C5	94.21 (7)
S6—C9—H9A	108.7	C6—S3—C8	95.71 (7)
C10—C9—H9B	108.7	C6—S4—C7	95.29 (7)
S6—C9—H9B	108.7	C8—S5—C12	102.98 (7)
H9A—C9—H9B	107.6	C7—S6—C9	100.68 (7)
N1—C1—C2—C3	-50 (9)	C1—C2—S1—C5	-178.05 (12)
N1—C1—C2—S1	129 (9)	C6—C5—S1—C2	-179.46 (12)
C1—C2—C3—C4	-1.2 (2)	S2—C5—S1—C2	-0.12 (8)
S1—C2—C3—C4	-179.88 (11)	C2—C3—S2—C5	0.78 (12)
C1—C2—C3—S2	177.64 (11)	C4—C3—S2—C5	179.67 (11)
S1—C2—C3—S2	-1.04 (16)	C6—C5—S2—C3	179.05 (12)
C2—C3—C4—N2	-168 (8)	S1—C5—S2—C3	-0.29 (9)
S2—C3—C4—N2	14 (8)	C5—C6—S3—C8	178.64 (12)
S2—C5—C6—S3	177.67 (7)	S4—C6—S3—C8	-2.39 (9)
S1—C5—C6—S3	-3.04 (18)	C7—C8—S3—C6	-0.40 (12)
S2—C5—C6—S4	-1.21 (18)	S5—C8—S3—C6	174.61 (8)
S1—C5—C6—S4	178.08 (7)	C5—C6—S4—C7	-177.40 (12)
S6—C7—C8—S5	5.36 (19)	S3—C6—S4—C7	3.65 (9)
S4—C7—C8—S5	-171.73 (7)	C8—C7—S4—C6	-4.05 (12)
S6—C7—C8—S3	-179.81 (8)	S6—C7—S4—C6	178.61 (8)
S4—C7—C8—S3	3.10 (16)	C7—C8—S5—C12	-162.25 (12)
S6—C9—C10—C11	-62.05 (14)	S3—C8—S5—C12	23.05 (10)
C9—C10—C11—N3	-17 (4)	C13—C12—S5—C8	73.13 (13)
S5—C12—C13—C14	59.88 (18)	C8—C7—S6—C9	93.08 (14)
C12—C13—C14—N4	-35 (11)	S4—C7—S6—C9	-89.84 (9)
C3—C2—S1—C5	0.68 (12)	C10—C9—S6—C7	-72.76 (12)

Fig. 1

